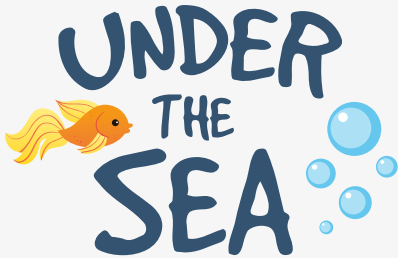




PRO CARTON
PACKAGING FOR
A BETTER WORLD

BRING YOUR
OLD CEREAL BOX
TO SEA LIFE!

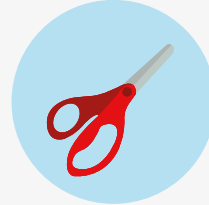
Things you will need...



Empty Cereal Box



Printer

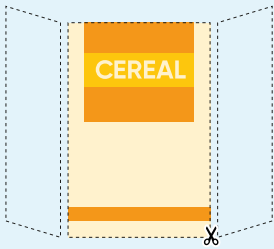


Safety Scissors



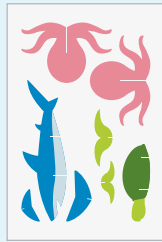
Glue Stick

1



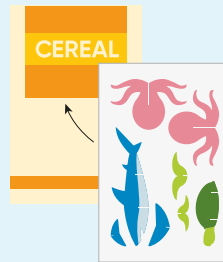
Using safety scissors,
cut out the front panel
of your cereal box.

2



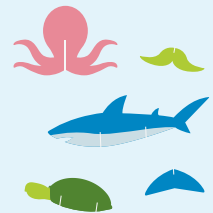
Print out the Sea Life
template on a piece
of white A4 paper.

3



Glue the Sea Life
template onto the printed
side of the cereal box.

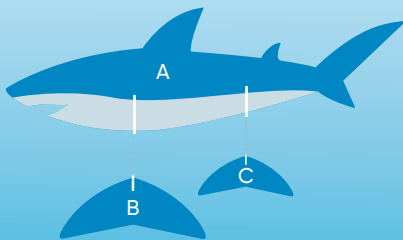
4



Let the glue dry and
then cut out all of the
8 individual shapes.

Sammy Shark

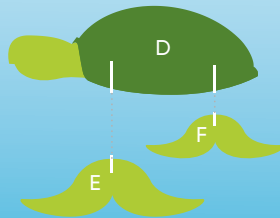
Pieces A, B and C



Slot fins (B & C) into the main
body of the shark (A)

Tomiko Turtle

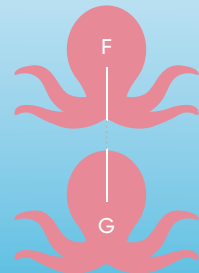
Pieces D, E and F



Slot fins (E & F) into the
main body of the turtle (D)

Inky Octopus

Pieces G and H



Slot both pieces of the
octopus together (F & G)

